

The background of the entire page is a vibrant blue sunburst pattern. A bright white sun is positioned in the center, with rays of light radiating outwards in all directions, creating a sense of energy and vitality. The rays are a lighter shade of blue, contrasting with the darker blue background.

# AQUA DETOX<sup>®</sup>

## Medical Research The Evidence

Aqua Detox<sup>™</sup> Ltd 1<sup>st</sup> Floor, Unit 4, Sundial Court, Tolworth Rise South, Surbiton, Surrey KT5 9RN UK  
[info@aquadetoxuk.com](mailto:info@aquadetoxuk.com) [www.aquadetoxuk.com](http://www.aquadetoxuk.com) Tel: +44(0) 208 330 1265 Fax: +44(0) 208 330 3666

© Copyright Aqua Detox<sup>™</sup> Ltd 2004



# At Aqua Detox™ we are keen to back-up our customers and therapists testimonials with the best available medical research.

Aqua Detox™ has been employing Scientists to research the effectiveness of the Aqua Detox™ treatment in a medically-approved laboratory.

Enclosed is a selection of photographs and brief explanatory notes drawn from research carried out to determine the beneficial effects of Aqua Detox™ on the blood.

The test results enclosed also record the effect of energising tap water with the Aqua Detox™ apparatus, in this case without human feet adding their contamination.

The notes from the laboratory are supported by a copy of the results of an energy conversion test carried out on a regular user of the Aqua Detox™ apparatus. The 100% Energy Block Value on page 5 is said by the doctor administering the test to be 'quite exceptional'.

Continued investment into medical research will yield even more exciting results and prove useful to both existing and potential users of Aqua Detox™.



# The scope of the research reports

The following pages offer data and notes on tests carried out to measure and analyse the effects on clients of the Aqua Detox™ treatment. The tests carried out in 2003 covered four areas of change following the treatment.

- Tests to determine the change in blood circulation using a thermal imaging camera.
- Tests to determine the contents of the water used in the Aqua Detox™ apparatus, before commencing treatment and the contents following five subsequent treatments.
- Tests to determine the effects of the treatment on the energy levels of key organs of the body.
- Tests to determine the beneficial effects of the treatment on human blood.

These reports and commentaries are supported by the results of an energy conversion test undergone by a regular user of the Aqua Detox™ apparatus. This test measures the increase in the body's overall energy level following an Aqua Detox™ Treatment. We have chosen three examples. In more than ten cases the tests were carried out after ten treatments.

## **The 100% Energy Block Value**

The energy level of the body (i.e. the vitality) increased already after the first treatment by:

in the first case.  
24.4%

in the second case.  
27.8%

in the third case.  
47%

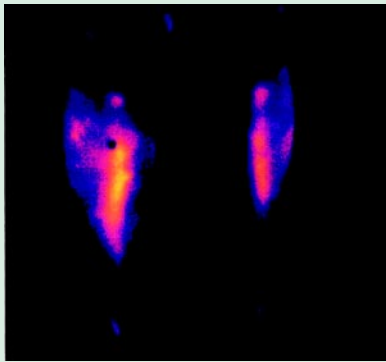
These results correlate with the blood appearance before and after the treatment (*see the results of all blood tests*).

The evidence shows that blood cells tested *after* a course of Aqua Detox™ live much longer than those prior to treatment.

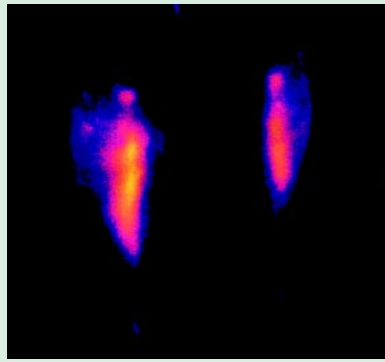
**TO ACHIEVE THE MAXIMUM BENEFIT FROM AQUA DETOX™  
SIX TREATMENTS ARE RECOMMENDED DURING THE  
INITIAL MONTH, FOLLOWED BY A MINIMUM OF ONE PER  
MONTH THEREAFTER.**



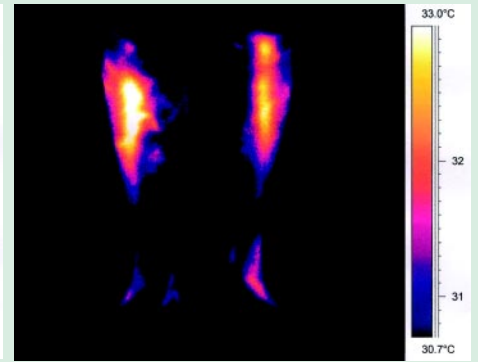
# Images of legs taken with a Thermal Imaging Camera



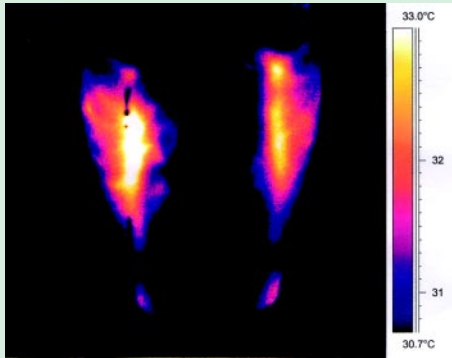
1. Feet not in the water.



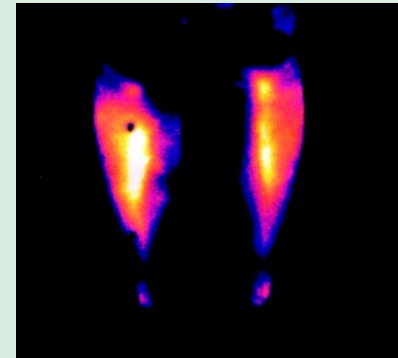
2. Feet in the water, apparatus off.



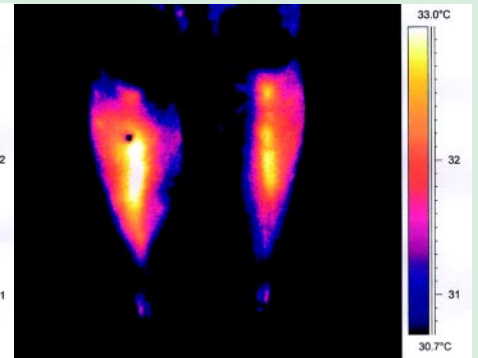
3. Feet in the water and apparatus switched on.



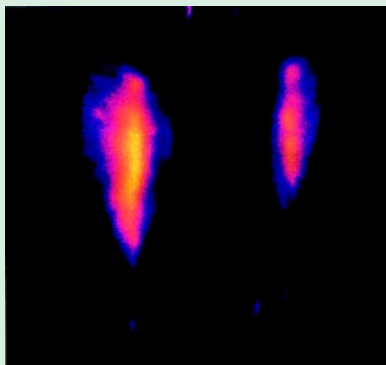
4. Feet in the water and apparatus switched on.



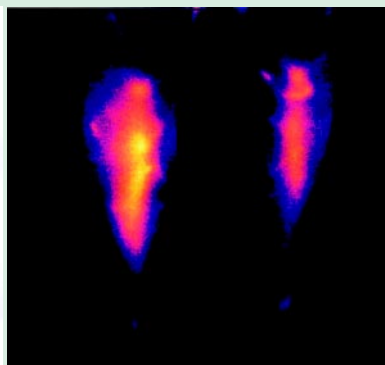
5. Feet in the water and apparatus switched on.



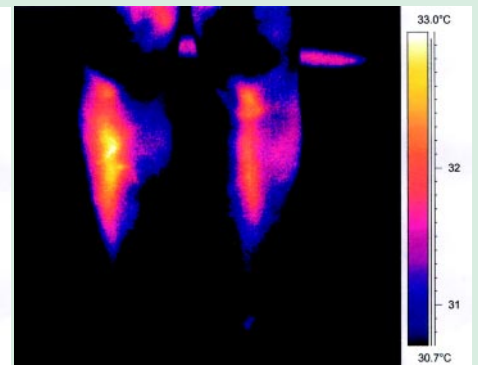
6. Feet in the water and apparatus switched on.



7. Feet in the water and apparatus switched off.



8. Feet out of the water and immediate photo.



9. Feet out of the water and 5 minutes after.

**During and after Aqua Detox™ treatment the temperature of the patient's legs is significantly increased, (by more than 1°C), indicating that the circulation has been improved significantly**

These photos relate to images from the feet to the knee.

We have scanned temperature changes from 30.7°C to 33.0°C.

We have used tap water at room temperature with sea salt added.

This study has been prepared with a healthy patient who has no pathological history of vascular problems.

Viewing picture 1 and 2 there appears to be no significant

difference between them.

Between picture 2 and 3 (note that the apparatus is switch on from picture 3), there is an increase in temperature in comparison with picture 1 and 2.

It will be noticed that between pictures 2, at a temperature of 32°C, and picture 3, at a temperature of a little more than 33°C, there is an apparent increase of +1°.

Between pictures 3 and 6 this increased temperature of 33°C is stable.

In picture 7, with the patient's feet still in the water, but the apparatus switched off, the temperature apparently starts to decrease, approx. – .5 of a degree.

Pictures 7 - 9 show that the situation remains stable at this figure.





# Tests on the water used in the Aqua Detox™ treatments

## Summary of method and results

These tests established what was in the water as drawn from a tap, what was removed by the use of the live array only, (no feet), and the contents of the water following each of the five treatments.

To ensure a good spectrum of tests, eight sources of water were used.

In each case a total of four tests were conducted, using:

-  Untreated tap water from different areas
-  The same water following treatment using an Aqua Detox™ array, but without placing the patient's feet in the water
-  The post-treatment water at the conclusion at each of five normal treatments administered to a single patient.
- 

We print test results of only the first and fifth treatments of fifteen patients. Four out of the total of eight water sources were used in these treatments and the results are grouped to reflect this.

The fifth test also established what was still being discharged from the body, and what was no longer being discharged, after five treatments.

## Conclusions

- **The treatment appears to support the kidneys' function very well, as is shown by the traces of ammonia found in the post-treatment water.**
- **The treatment releases harmful phosphates almost completely.**
- **Even after the fifth treatment the body is still discharging large quantities of nitrates, which indicates that more than five treatments are necessary in order to cleanse the body of this impurity.**

Four groups of clients,  
each using its own  
source of water

All data in milligrams per litre  
pH Iron Ammonia

Nitrates

Phosphates

<b>Tap water</b>	7.6	0.03	0.20	0.50	0.5
<b>Treatment with array only</b>	8.1	0.26	0.00	0.15	0.0
After 1st Treatment	8.1	0.05	2.44	9.80	0.8
After 5th Treatment	7.5	0.28	2.01	8.10	0.0
After 1st Treatment	8.3	0.17	1.10	0.90	1.5
After 5th Treatment	7.4	0.44	2.29	5.90	0.0
After 1st Treatment	6.9	0.10	1.76	7.70	3.5
After 5th Treatment	7.4	0.19	1.85	10.2	0.5
After 1st Treatment	7.7	0.15	1.04	2.20	2.5
After 5th Treatment	7.2	0.25	0.25	12.0	0.0
After 1st Treatment	8.0	0.10	2.53	2.40	1.0
After 5th Treatment	6.9	0.28	2.59	8.00	0.0

<b>Tap water</b>	7.4	0.04	0.21	0.30	0.9
<b>Treatment with array only</b>	7.9	0.35	0.00	0.17	0.0
After 1st Treatment	7.0	0.15	3.50	7.20	4.0
After 5th Treatment	7.2	0.28	1.09	7.60	0.0
After 1st Treatment	7.0	0.15	3.50	7.00	4.0
After 5th Treatment	7.0	0.28	2.56	8.10	0.3

<b>Tap water</b>	6.7	0.05	0.16	0.70	0.4
<b>Treatment with array only</b>	8.2	0.31	0.04	0.50	0.0
After 1st Treatment	7.9	0.10	0.82	1.70	0.8
After 5th Treatment	7.5	0.36	1.00	1.60	0.0
After 1st Treatment	7.6	0.05	0.63	0.80	0.5
After 5th Treatment	7.4	0.37	0.54	1.40	0.0

<b>Tap water</b>	7.7	0.10	0.00	0.90	0.0
<b>Treatment with array only</b>	8.0	0.23	0.00	0.50	0.0
After 1st Treatment	7.9	0.05	0.98	2.10	0.5
After 5th Treatment	7.5	0.22	1.34	2.20	0.1
After 1st Treatment	7.9	0.20	1.95	3.10	2.0
After 5th Treatment	7.4	0.26	1.19	2.50	0.0
After 1st Treatment	8.4	0.17	0.48	2.70	0.5
After 5th Treatment	7.7	0.24	0.52	3.30	0.0
After 1st Treatment	7.9	0.25	1.03	2.30	0.2
After 5th Treatment	8.1	0.25	0.80	2.90	0.0
After 1st Treatment	8.1	0.15	3.30	3.90	1.0
After 5th Treatment	7.9	0.29	2.50	5.40	0.0
After 1st Treatment	7.7	0.15	0.93	1.50	0.9
After 5th Treatment	8.0	0.22	1.50	3.80	0.0

Key:

tap water	
treatment with array only	
after 1st treatment	
after 5th treatment	



# Key organ energy levels

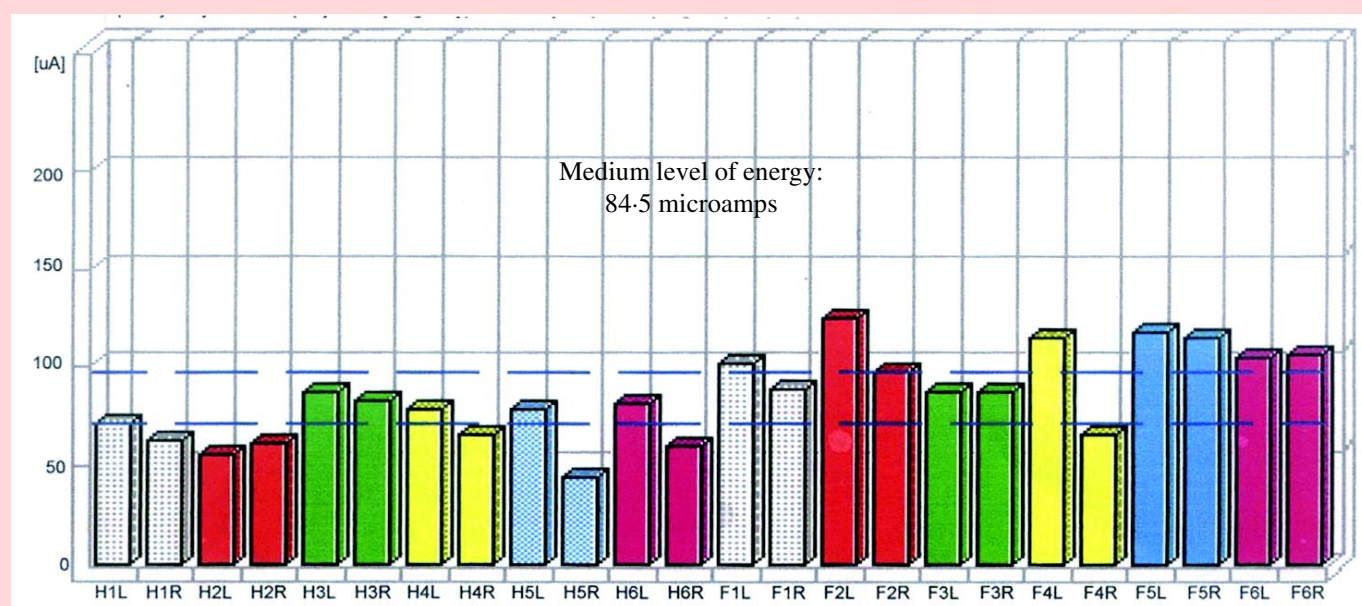
Measurement of the current flow at energy points relative to specific organs determines the energy levels of the organs in question. In the two charts below the results are shown by two vertical bars, next to each other, which correspond to the left and right sides of each organ. The average energy level of the two bars is the energy level of that particular organ, the mean of left and right. This is the figure we are interested in.

The upper graph shows test results after one treatment – see how the organs left and right are at different heights. These readings reflect the general condition of most human beings. The overall average reading is 845 micro-amperes.

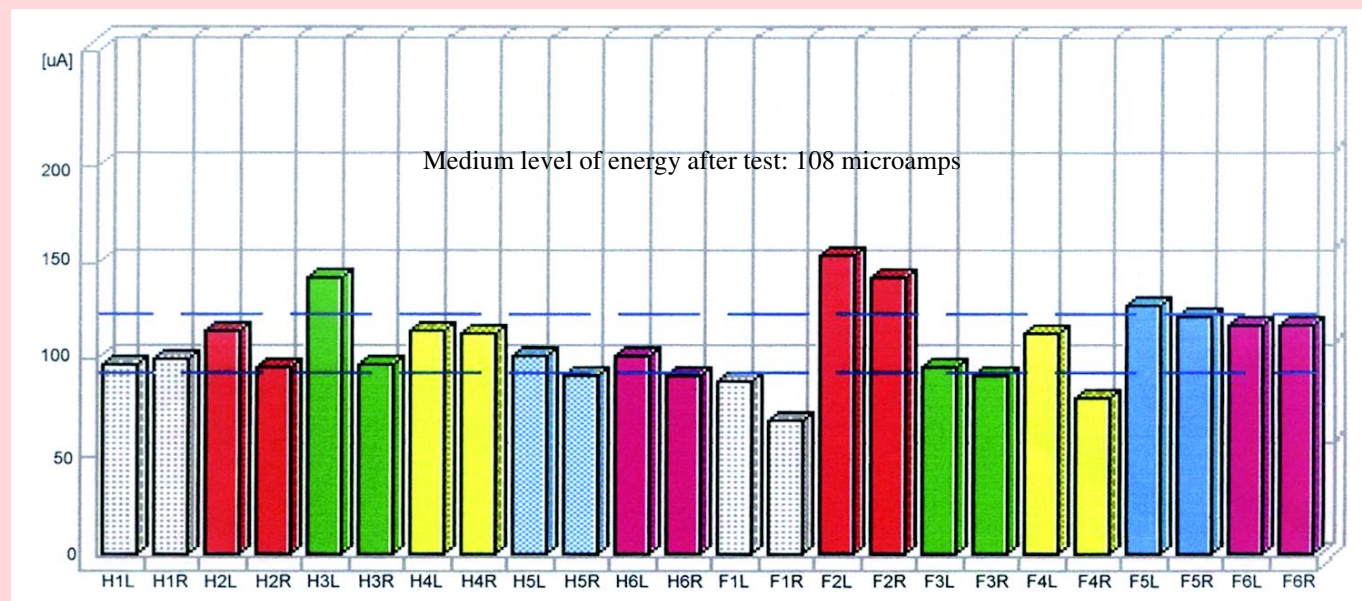
On the lower graph the organs are balanced and the average reading is 108 micro-amperes.

A significant number of people were tested before and treatment. The results were very similar in all cases.

## After one treatment



## After three treatments



H1 – Lungs	H4 – Intestines	F1 – Spleen	F4 – Urinary Bladder	L & R – Left and Right
H2 – Pericardium	H5 – Meridians TH	F2 – Liver	F5 – Gall Bladder	
H3 – Heart	H6 – Colon	F3 – Kidneys	F6 – Stomach	

# Photographic examination of blood samples taken before and after treatment

The blood examinations, photographs of which are displayed in the following pages, were carried out by a specialist in homeotoxicology and isopathy. The examinations were carried out using the following method:

- i a drop of the patient's blood is put directly on to a base glass and covered with an upper glass;
- ii the sample is immediately photographed at a magnification of x 1200;
- iii the enlargements are examined and photographs of pre-treatment samples are compared with those of post-treatment samples taken from the same patient.

The enlarged photographs allow us to draw important conclusions about the blood's overall environment. The photographs of blood taken from the patients before and after treatment suggest that blood taken after treatment lives much longer than blood taken from the same patient before treatment. The cells of the former are large, have not collapsed and are much more robust.

*“What is amazing is that after only one 30-minute treatment most of the impurities present before treatment have disappeared.”*

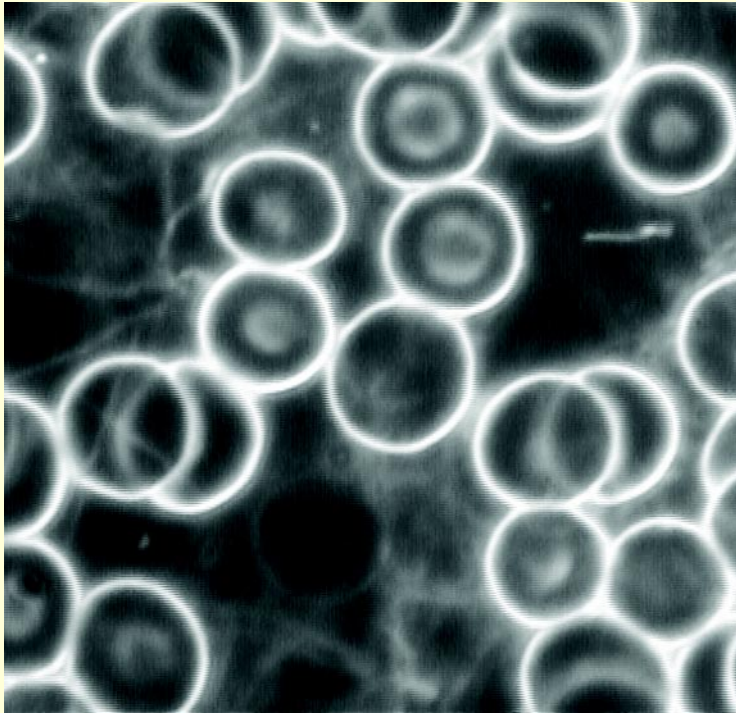
*“The Aqua Detox™ treatment not only removes impurities thoroughly – toxins, simplast, fillit networks – it also energises cells and limits free radicals.”*

A leading European Medical Institute Spokesperson

In the five pages which follow the upper photographs, taken before treatment, show irregularly-shaped cells which are 'daisy-chained' and clumped together. The lower photographs which were taken following treatment show well-defined, regularly-shaped cells which are beginning to separate.



# Enlargements of blood cell photographs – Client no. 1



## Before treatment

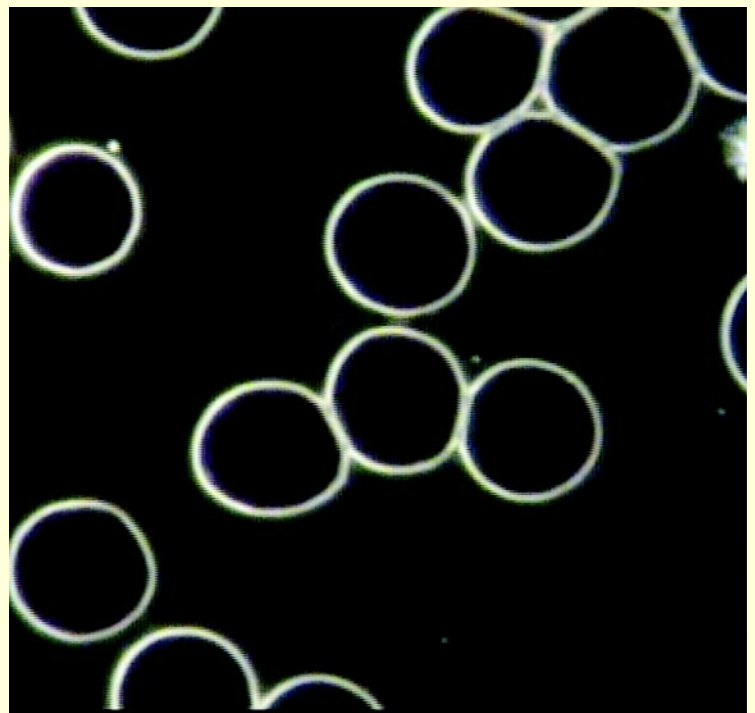
The photograph shows blood in an acid state with high levels of bacteria and low levels of anti-bodies – with the risk of arteriosclerosis (a gradual loss of elasticity in the walls of arteries due to the thickening of their walls and to calcification).

### *Analysis:*

*High degree of acidosis and of pathogenic forms of erythrocytes, too weak (decreased) immunological disorder, with the risk that arteriosclerosis may develop.*

## After treatment

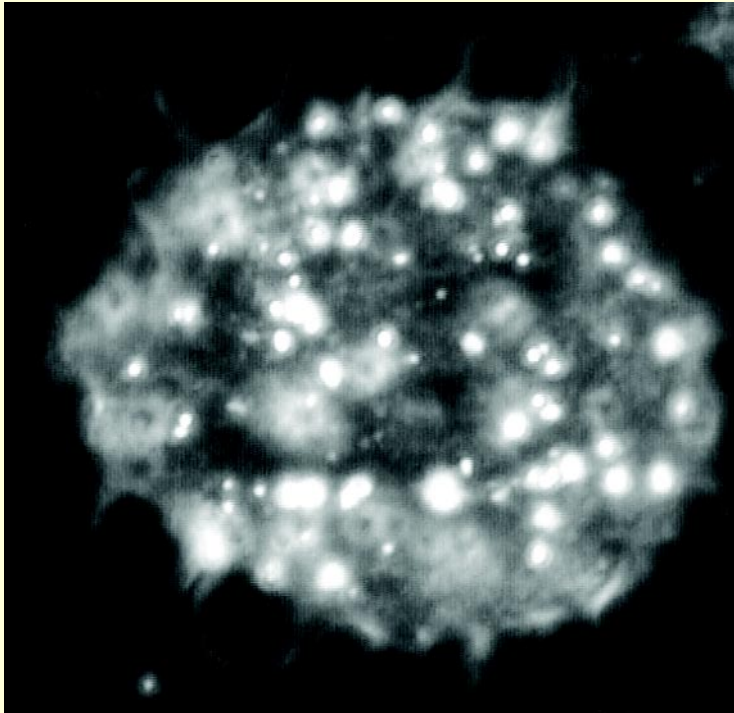
**Blood and acidity levels are normal and bacteria levels in the serum are significantly reduced.**



### *Analysis:*

*Normal picture of erythrocytes, with significant reduction in the number of pathogenic forms in the serum. Acid base normal, balanced.*

# Enlargements of blood cell photographs – Client no. 2



## Before treatment

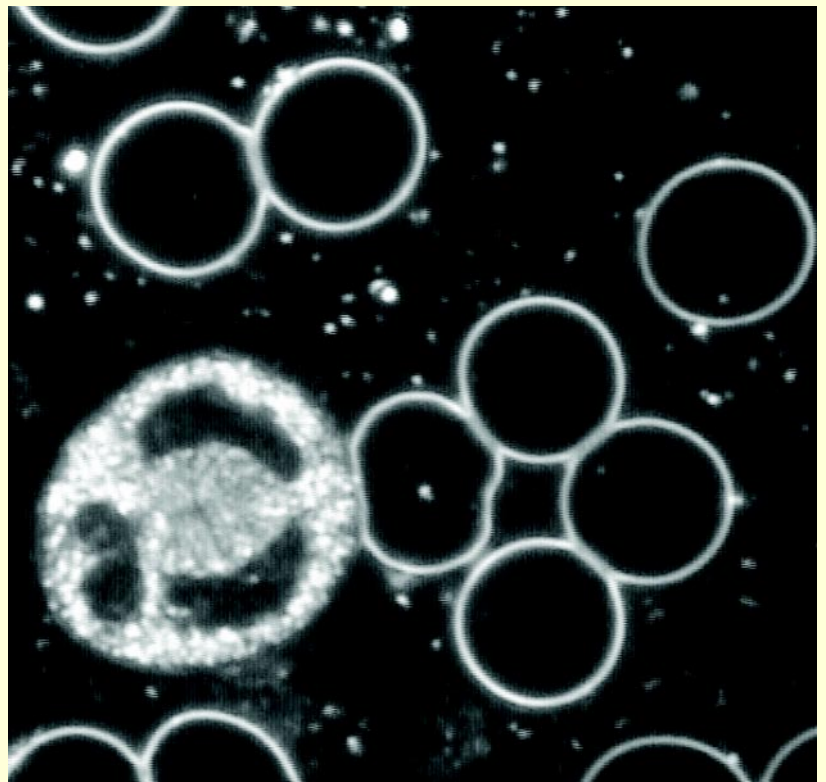
Showing toxins which pollute the joints.

*Analysis:  
Simplast*

## After treatment

Lack of pollution, the body has developed reinforced anti-bodies to its own tissues.

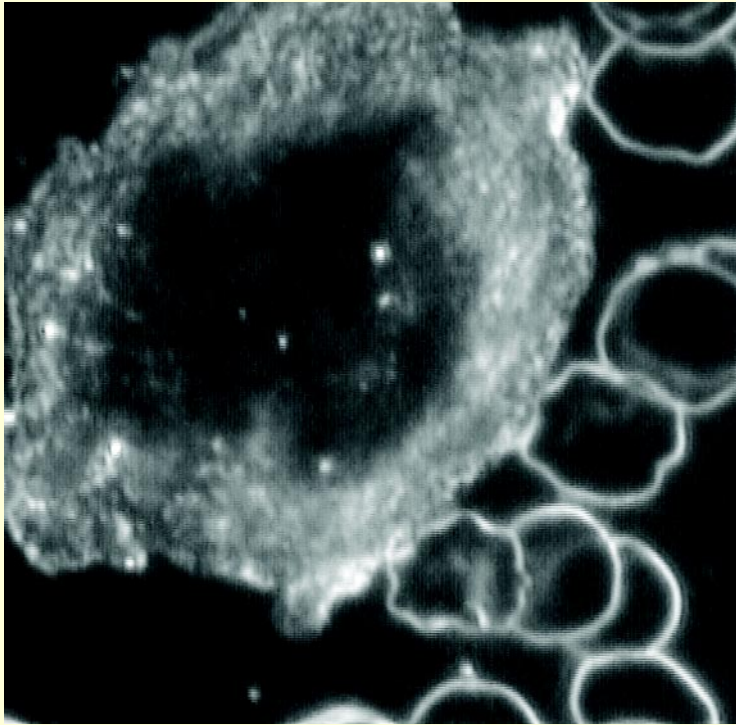
Absence of pollution, and enhanced presence of anti-bodies, strengthening immune system.



*Analysis:  
Lack of pollution, reinforced immunological system.*



# Enlargements of blood cell photographs – Client no. 3



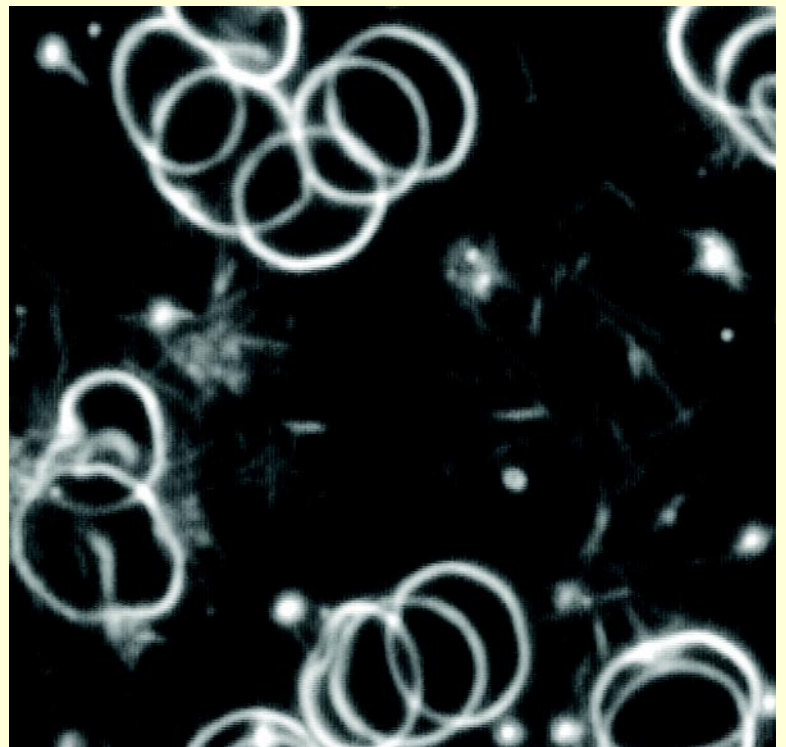
## Before treatment

Showing toxins which pollute the joints.

*Analysis:  
Simplast*

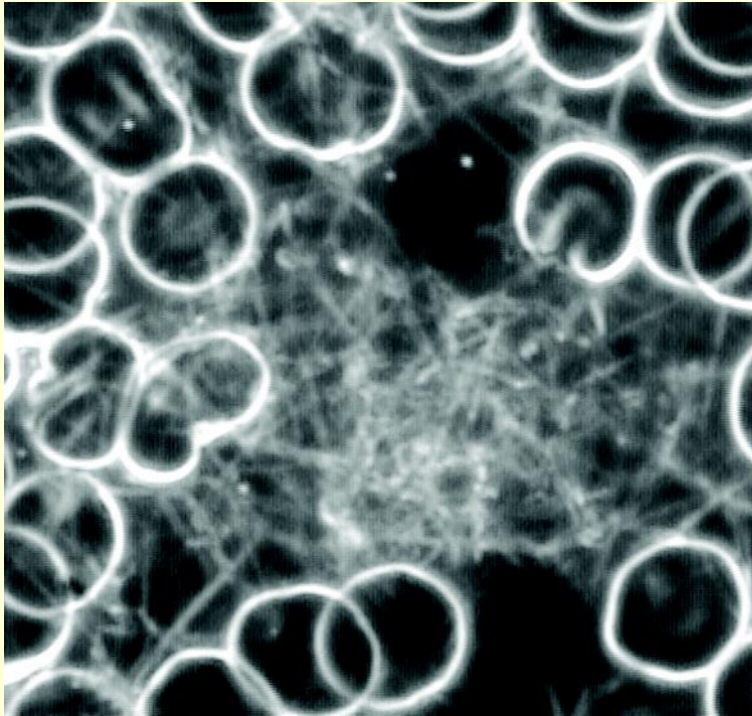
## After treatment

More oxygen in the blood.  
More energy in the cells.



*Analysis:  
Reduction of the hypoxia degree, less symptoms of the  
rulonisation.*

# Enlargements of blood cell photographs – Client no. 4



## Before treatment

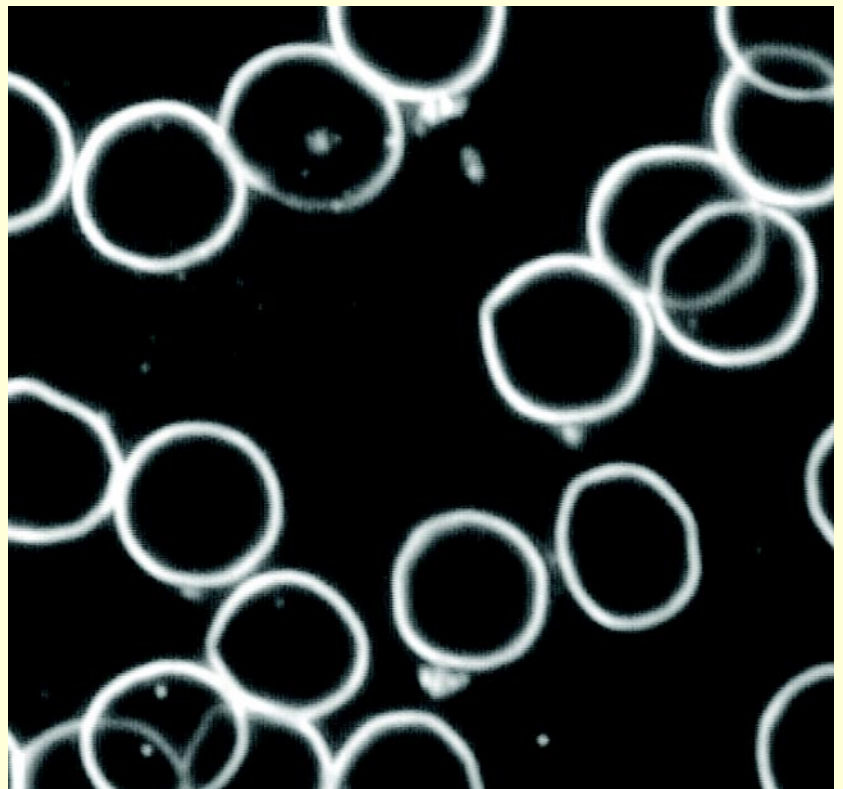
Photograph shows blood lacking in corpuscles and with excess of protein, a chronic condition in which the body develops anti-bodies to its own tissues.

*Analysis:*

*Filter network showing the degree on the endothelium damage, also protein excess, chronic auto-immune disorder and acidosis.*

## After treatment

**Blood cells normal.**

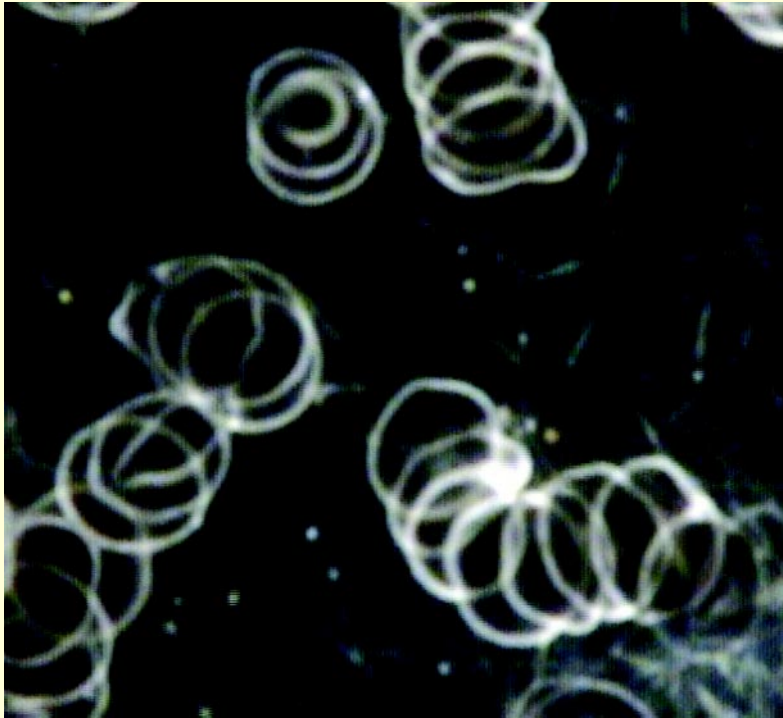


*Analysis:*

*Picture of erythrocytes normal.*



# Enlargements of blood cell photographs – Client no. 5



## Before treatment

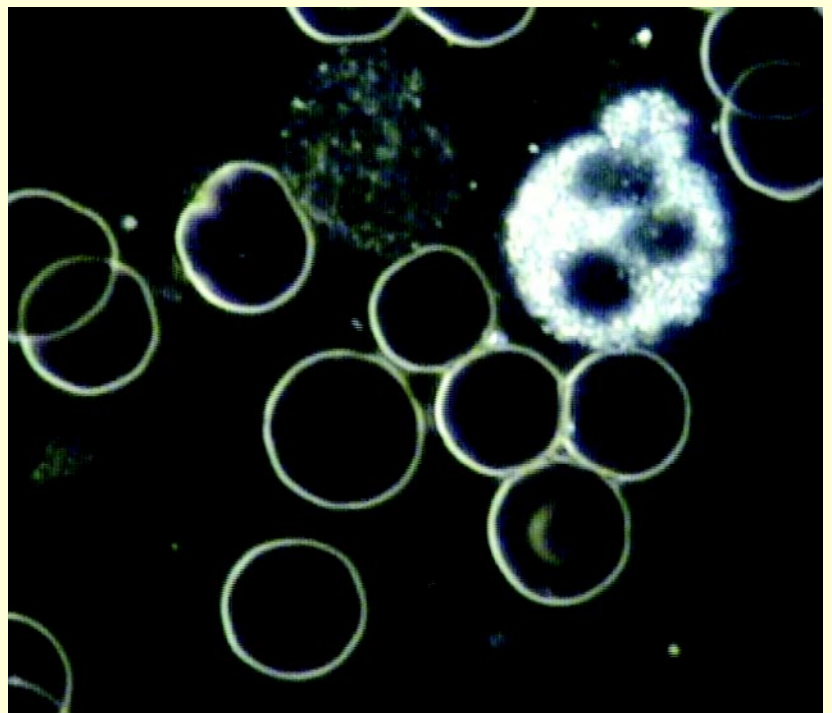
The blood is lacking in oxygen and the body, in an acid state, is developing anti-bodies to its own tissues.

*Analysis:*

*Chronic hypoxia, chronic auto-immunological disorder and acidosis.*

## After treatment

**Blood cells back to normal.**



*Analysis:*

*Picture of erythrocytes normal.*

# The Aqua Detox™ treatment is a safe, effective and convenient way to detoxify and to re-balance your body's energy fields and cells

## Is your body stressed, out of balance?

Modern day living – stress and poor diet – introduce toxins into your body which cause an imbalance to the natural energy within your cells. It is the natural function of your cells to absorb nutrients and excrete waste products. Any imbalance can prevent the cells from performing this function efficiently.

## How does the Aqua Detox™ treatment work?

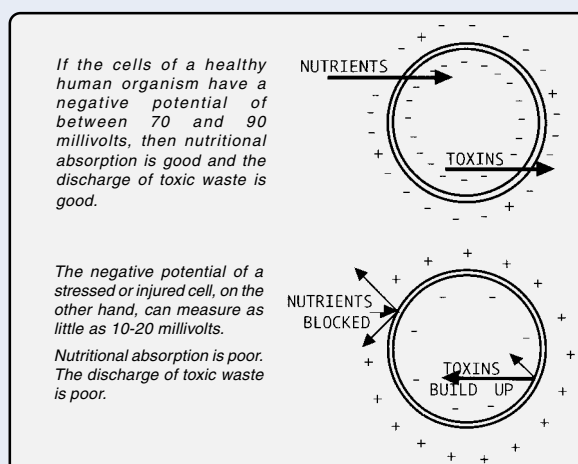
The Aqua Detox™ apparatus produces a frequency (from the array) which resonates gently through your body and stimulates all the cells within it. This has the effect of re-balancing the cellular energy, thus enabling the cells to perform efficiently and to release any toxins which may have built up. (See the explanatory diagram in the next column.).

## Why should I use Aqua Detox™?

Our research and testimonials have shown that Aqua Detox™ has benefited our clients by increasing their energy levels and improving their general sense of wellbeing. Although Aqua Detox™ makes no claims to cure medical conditions, many clients and practitioners have reported that their existing health problems have been helped enormously by their treatment.

## How are the treatments administered?

Aqua Detox™ treatments are usually given through the feet, as this is both convenient and, since each foot has over 2000 pores through which toxins can be excreted, very efficient. The array can also be placed in the



bath (with care) so that most of the body can be immersed. This is especially useful for the treatment of very young children and babies.

## How many treatments should I have?

It is recommended that clients should have, initially, a minimum of six treatments over a month. This provides a good initial detoxification. Thereafter the frequency of treatments will be decided by the patient's own view of his or her general health.

We do recommend, however, that the frequency should not exceed one treatment every two days.

Those who are ill may experience tiredness or some other adverse, though not severe, reaction following treatment. This occurs as the body enters the healing mode, using energy to heal itself, and the frequency of treatment should be reduced whilst this feeling persists. A feeling of increased energy sometimes follows this reaction.

## The development of Aqua Detox™ apparatus

In the 1930s Dr. Royal R. Rife conducted research and developed a unit which enabled the body to re-balance itself. It is his research



and this early unit which have led to the development of the type of detoxification in use today and, ultimately, to the development of our own apparatus, named Aqua Detox™.

## **What are the benefits of the Aqua Detox™ treatment?**

The benefits of the Aqua Detox™ treatment are numerous and many people have enjoyed significant relief from the symptoms of illness. Aqua Detox™ treatment is never the same for any two people and this means that quite different results may be experienced by people suffering from what appear to be comparable symptoms. This because the symptoms may be caused by different underlying conditions.

## **Can everyone use the Aqua Detox™ apparatus?**

There are three specific categories of people who should not use the Aqua Detox™ apparatus — those with pacemakers, those who suffer from epilepsy and pregnant women. A pregnant woman who has had an Aqua Detox™ treatment should not be overly concerned, but we advise against continuing with treatment. Anyone in any doubt about using the apparatus should check with his or her doctor.

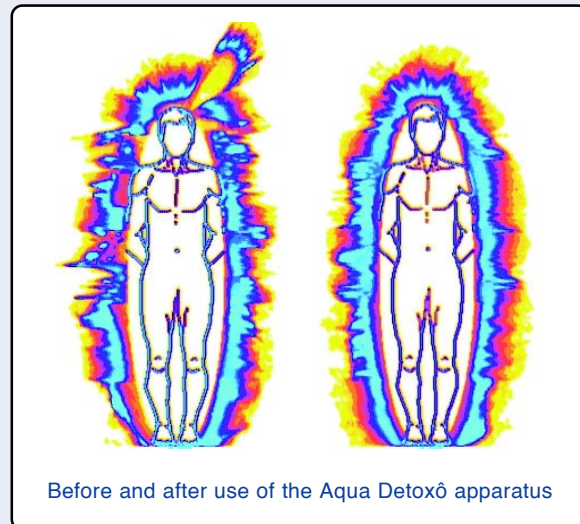
A person taking medication should not hesitate to use the apparatus. The Aqua Detox™ treatment stimulates only the natural bodily function of excretion, so supports only the removal of toxins and other impurities which, for whatever reason, the body's cells have allowed to build up. The treatment will not stimulate the body to excrete any vitamins, minerals, nutrients or medication carried in the body pending absorption.

## **What do the colours of the treatment water mean?**

Whilst the colours produced in the water during the Aqua Detox™ treatment do, understandably, intrigue most people, it is not

possible to state with certainty that any one colour is specific to a particular organ or part of the body.

Colour is not a scientific measurement, and



no scientific or medical equipment exists which can relate the colour of the treatment water to specific organs or areas of the body.

In the field of the body's energy field, on the other hand, colour can be said to have specific meaning – and Aqua Detox™ has gone so far as to use a Gas Discharge Visualisation (GDV) camera to show the effects of the Aqua Detox™ treatment on the body's energy field.

These pictures above show the disrupted energy field before treatment and the improved profile after treatment. The GDV camera is recognised by the Russian authorities as an instrument of scientific research.

The company has also used a Thermal Imaging Camera, a medically-approved instrument widely used in hospitals in the UK, to photograph the effect of the Aqua Detox™ treatment on the body.

The research into the benefits of the Aqua Detox™ treatment continues and we hope to be able to bring you further information in the near future.



**Simply put your feet in water and start to detox.**



Enhance your clients'  
wellbeing with

**AQUA DETOX™**

*The revolutionary way to  
self detoxify and  
re-balance your body.*

**As reported by  
The BBC,  
The Daily Telegraph  
& The Sunday Times**

**Aqua Detox™ Ltd**

1<sup>st</sup> Floor, Unit 4, Sundial Court,  
Tolworth Rise South, Surbiton,  
Surrey KT5 9RN UK

**info@aquadetoxuk.com**

**www.aquadetoxuk.com**

**Tel: +44(0) 208 330 1265**

**Fax: +44(0) 208 330 3666**